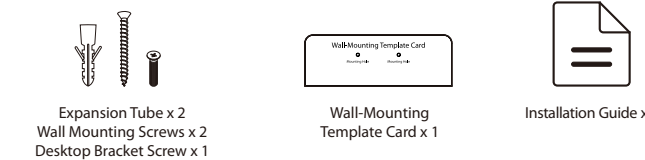
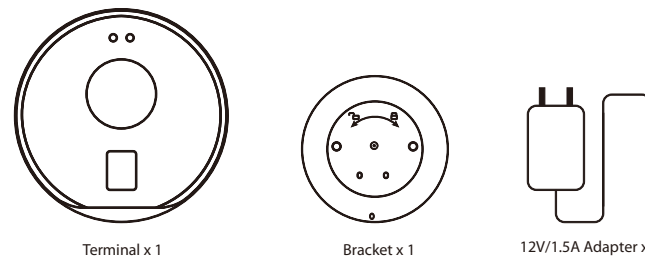


# Installation Guide

M6 Series

Version: 1.1

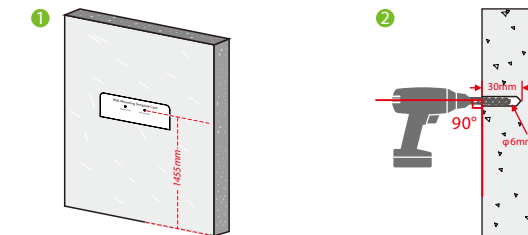
## What's in the box?



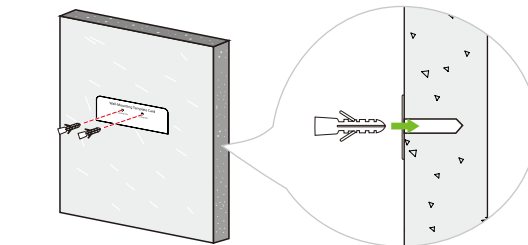
1

## How to Install the Device on the Wall?

**Step 1:** Stick the wall-mounting template card to the wall and drill holes according to the wall-mounting template card.

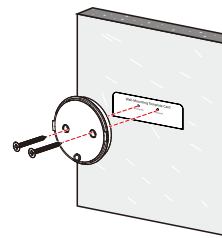


**Step 2:** Insert the expansion tubes into the mounting holes.

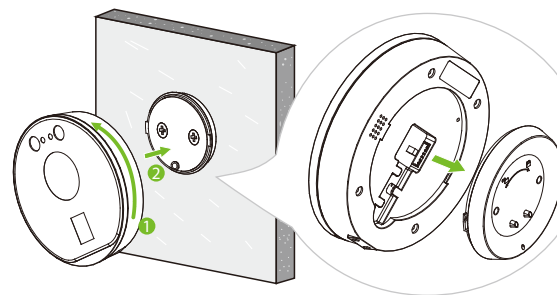


2

**Step 3:** Attach the bracket on the wall using the wall mounting screws.



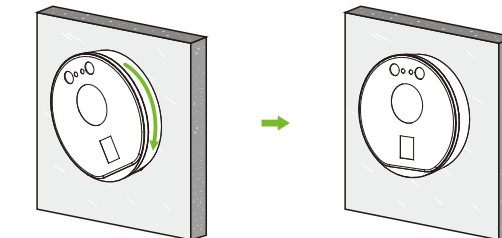
**Step 4:** Attach the terminal to the bracket.



**Note:** Before attaching the terminal to the bracket, you need to tilt the terminal to the left at an angle.

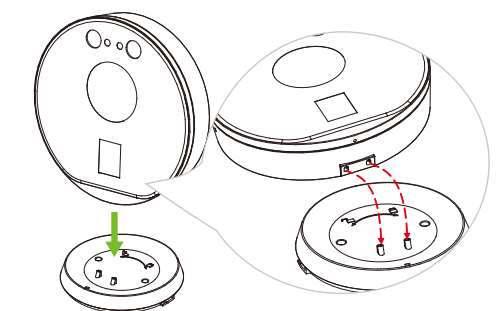
3

**Step 5:** Rotate the fixing terminal clockwise.



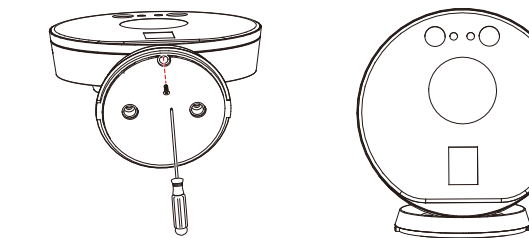
## How to Install the Device on the Desktop?

**Step 1:** Attach the terminal to the bracket.



4

**Step 2:** Tighten it with a desktop bracket screw.



## Download Center

Scan the QR Code to download the **User Manual**, **Installation Guide** and **Quick Start Guide**.



QR Code (Download)

5

ZKTeco Middle East  
P.O. Box 4323, Office 502, Bay Square 1, Al Asayel St.,  
Business Bay, Dubai, UAE  
Phone : +971 4 392 7649  
Email : zk\_me@zktco.com  
www.zktco.me

