



SpeedFace-V5L[QR]

QR Code and Biometric Verification Terminal
with Mask Detection Technology



Facial
Recognition



Palm
(Customized)



QR Code



Masked Face

Compatible with

 **ZKBio CVAccess**

 **ZKBio CVSecurity**



SpeedFace-V5L[QR] is an upgraded version of the SpeedFace-V5L Visible Light Facial Recognition Terminal, using intelligent engineering facial recognition algorithms and the latest computer vision technology. It supports a multi-factor identity authentication system by using QR Codes and acquired face/palm data for computational template matching. Besides, the terminal offers large capacity and speedy recognition.

SpeedFace-V5L[QR] is powered by the QR Code Scanner that reads barcodes, such as QR codes, PDF417, Data Matrix, MicroPDF417, Aztec, presented on our ZKBio CVAccess Mobile App for T&A / A&C. What's more? The terminal adopts touchless recognition technology and supplementary functions namely masked individual identification, which eliminates hygiene concerns effectively. It is also equipped with an antispoofing algorithm for facial recognition against almost all types of fake photos and videos attack. Importantly, the 3-in-1 palm recognition (Palm Shape, Palm Print and Palm Vein) is performed in 0.35s per hand; the palm data acquired will be compared with a maximum of 3,000 palm templates.

The terminal with mask detection will be a perfect choice to help reduce the spread of germs and help prevent infections straightly at each access point of any premises and public areas such as hospitals, factories, schools, commercial buildings, stations during the recent global public health issue with its fast and accurate masked individual identification function during facial and palm verification as well as QR Code scanning. Moreover, it is compatible with ZSmart App & ZKBio CV Security when switching to BEST protocol.

* **NOTE:** Palm recognition function is customized for customers.

Features

- 2D barcodes scanning: QR Code, PDF417, Data Matrix, MicroPDF417, Aztec
- Scramble QR codes with ZKBio CVAccess Mobile App
- Visible Light Facial Recognition
- Better hygiene with touchless biometric authentication and masked individual identification
- Anti-spoofing algorithm against print attack (laser, color and B/W photos), videos attack and 3D mask attack
- Available card modules: 12.5 KHz EM card / 13.56MHz IC card (MF)
- Supplement light with adjustable brightness
- Multiple Verification Methods: Face / Palm(Customized) / QR Code / Card / Password

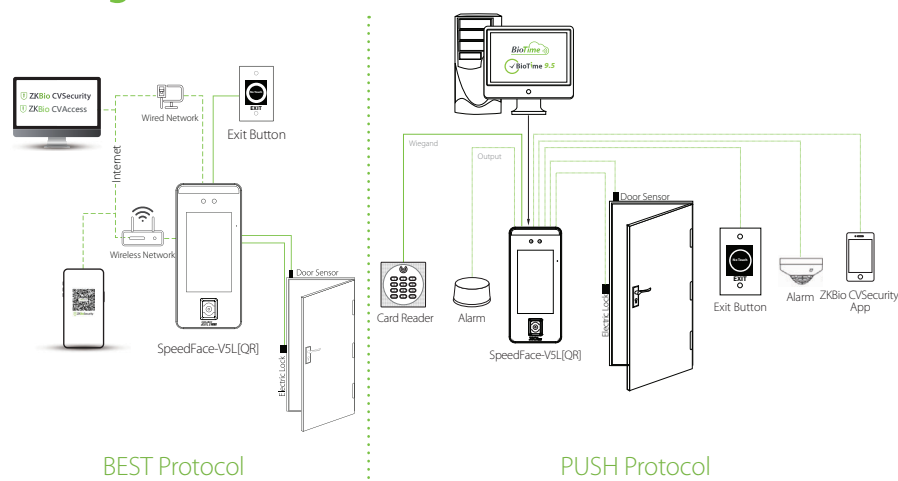
* Facial verification for masked individuals will increase FAR. Palm verification (Customized) for masked individuals is recommended.

Specifications

Display	5-inch Touch Screen
Face Template	6,000 (Optional:10,000)
Palm Template	3,000 (Customized)
Card Template	10,000
Transaction	200,000
Operation System	Linux
Standard Function	ID Card, ADMS, T9 Input, DST, Camera, 14-digit User ID, Access Levels, Groups, Holidays, Anti-passback, Record Query, Tamper Switch Alarm, Multiple Verification Methods
Hardware	900MHz Dual Core CPU, Memory 1G RAM / 8G Flash, 2MP WDR Low Light Camera, Adjustable Light Brightness LED, Barcodes Scanning
Communication	TCP/IP, Wi-Fi (Optional), Wiegand Input/Output, RS485*
QR Sensor	QR Code, PDF417, Data Matrix, MicroPDF417, Aztec
Access Control Interface	3rd-Party Electric Lock, Door Sensor, Exit Button, Auxiliary Input, Auxiliary Output (Alarm)
Optional Function	13.56MHz IC Card (MF)
Facial Recognition Speed	≤1s
Biometrics Algorithm	ZKFace 3.9 & ArmaturaPalm(Customized)
Power Supply	DC 12V, 3A
Operating Humidity	10% to 90%
Operating Temperature	-10°C to 45°C (14°F to 113°F)
Dimensions (W*H*D)	91.93 * 202.93 * 21.5 (mm)
Supported Software	Software: ZKBio CVAccess / ZKBio CVSecurity / BioTime Cloud / BioTime 9.5 Mobile App: ZKBio TimeCloud / ZSmart

* Note: RS485 is for RS485 readers.

Configuration



Dimensions (mm)

