

# SpeedFace-H5L

Linux-Based Hybrid Biometric  
Access Control and Time & Attendance Terminal  
with Visible Light Facial Recognition



Proactive Facial  
Recognition



New Height of  
Anti-Spoofing



Speedy  
Recognition



Wide Pose Angle  
Acceptance



Touchless for  
Better Hygiene

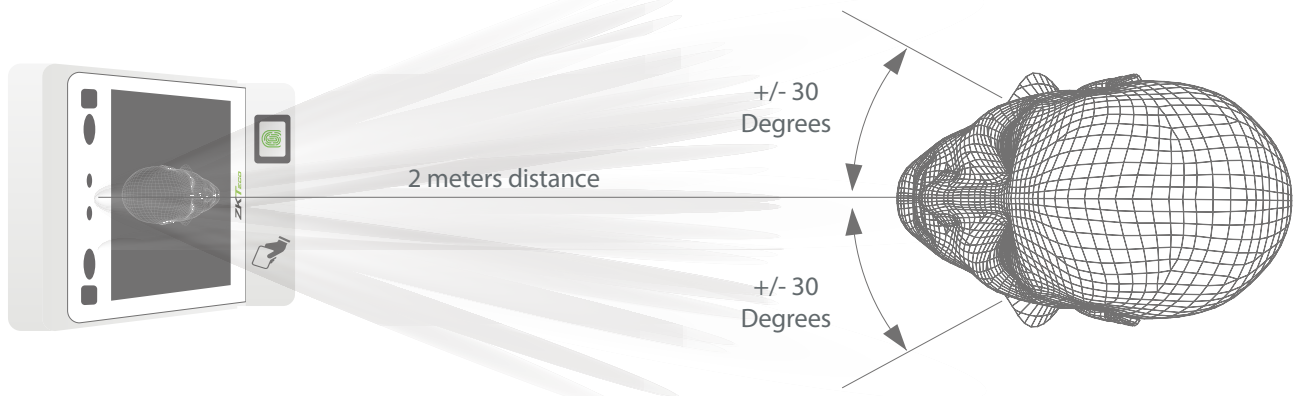
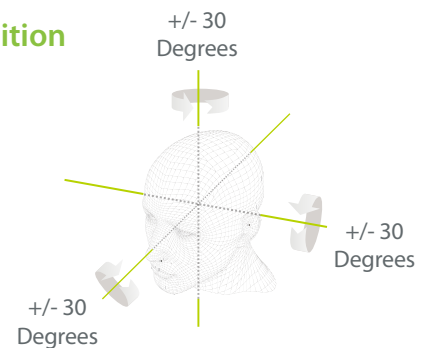


## Features:

- Visible Light Facial Recognition
- Anti-spoofing algorithm against print attack (laser, color and B/W photos), videos attack and 3D mask attack
- Multiple Verifications: Face / Fingerprint / Card / Password
- Optional card modules: 125KHz ID card (EM) / 13.56MHz IC card
- Supplement light with adjustable brightness
- 6,000 face templates capacity

## Recognition distance up to 2m long and extra wide angle recognition

The recognition distance has been greatly extended up to 2 meters long, which significantly improves maximum traffic rate. While most of algorithms only support 15-degree angle facial recognition, ZKTeco supports 30-degree angle facial recognition.

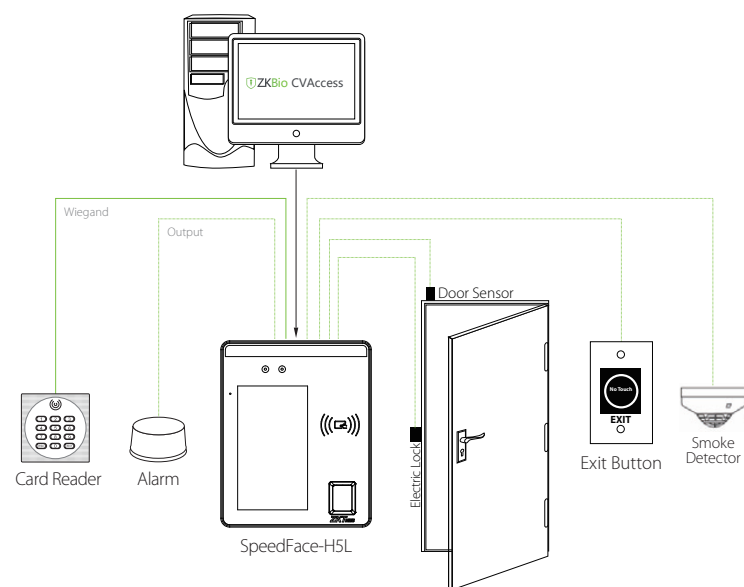


## Specifications:

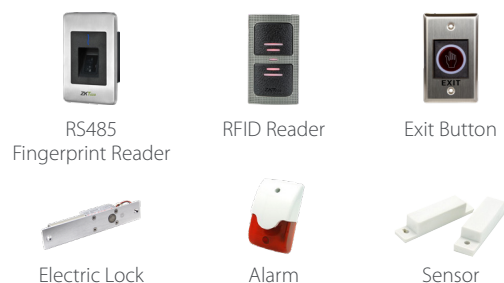
|                          |  |
|--------------------------|--|
| Display                  | 5-inch Touch Screen  |
| Face Capacity            | 6,000  |
| Fingerprint Capacity     | 10,000   |
| Card Capacity            | 10,000 (Optional)  |
| Palm Capacity            | 3,000  |
| Transactions             | 200,000  |
| Operation System         | Linux  |
| Standard Functions       | ADMS, T9 Input, DST, Camera, 9-digit User ID, Access Levels, Groups, Holidays, Anti-passback, Record Query, Tamper Switch Alarm, Multiple Verify Modes |
| Hardware                 | 900MHz Dual Core CPU<br>Memory 512MB RAM / 8G Flash<br>2MP WDR Low Light Camera<br>Adjustable Light Brightness LED                                     |
| Communication            | TCP/IP, WiFi (Optional),<br>Wiegand input / output, RS485*   |
| Access Control Interface | 3rd Party Electric Lock, Door Sensor, Exit Button,<br>Alarm output, Auxiliary Input  |
| Optional Function        | 13.56MHz IC card   |
| Facial Recongntion Speed | ≤1s  |
| Biometrics Algorithms    | ZKFace 3.9 & ZKFinger V10.0 & Armatura Plam  |
| Power Supply             | 12V 3A   |
| Working Humidity         | 20% - 80%  |
| Working Temperature      | 0 °C - 45 °C   |
| Dimensions (W*H*D)       | 134.93 * 166.93 * 21.5mm   |
| Supported Softwares      | ZKBio CVAccess , ZKBio CVSecurity, BioTime 9.5, BioTime Cloud  |

\* Note: RRS485 is for RS485 readers.

## Configuration:



## Optional Accessories:



## Dimensions(mm):

