



SL02-ZL140H

Minimalist Elegance
Constructed of Durable Aluminum Alloy



Remote
Monitoring



Mobile
Credential



Wireless
Communication



Emergency
Escape

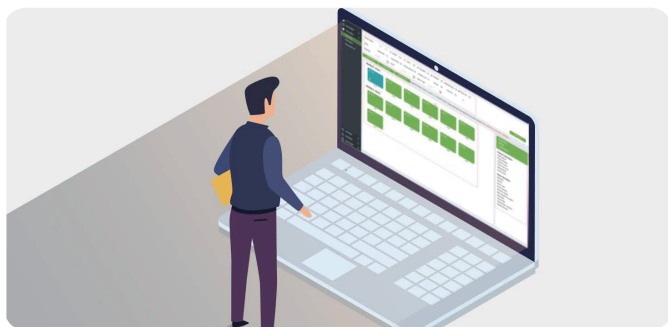
Compatible with **SmartLock**
ZKBio CVSecurity



Introduction

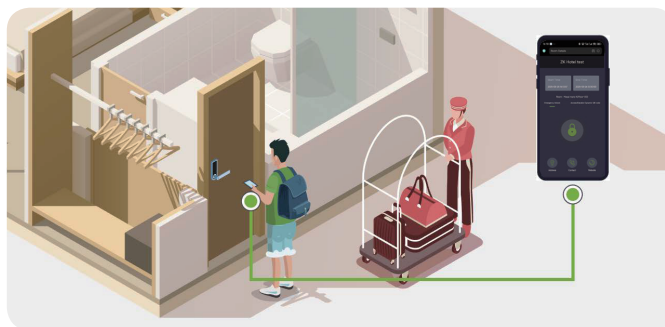
SL02-ZL140H offers the convenience of a wireless hotel lock, it supports connecting to the hotel lock management system-ZKBio CVSecurity SmartLock, the lock supports remote control, status monitor and unlock record synchronization. Users can achieve access control and elevator control system by Multi-Tech cards. It is an ideal solution for smart hotels and resorts.

Features



Remote Monitoring

Monitor doors' status in real-time from anywhere



Mobile Credential

Unlock simply with a smartphone HTML5 (H5)



Integrated Card Management

When writing guest's cards, you can quickly select the access control and elevator control permissions of the guests simultaneously



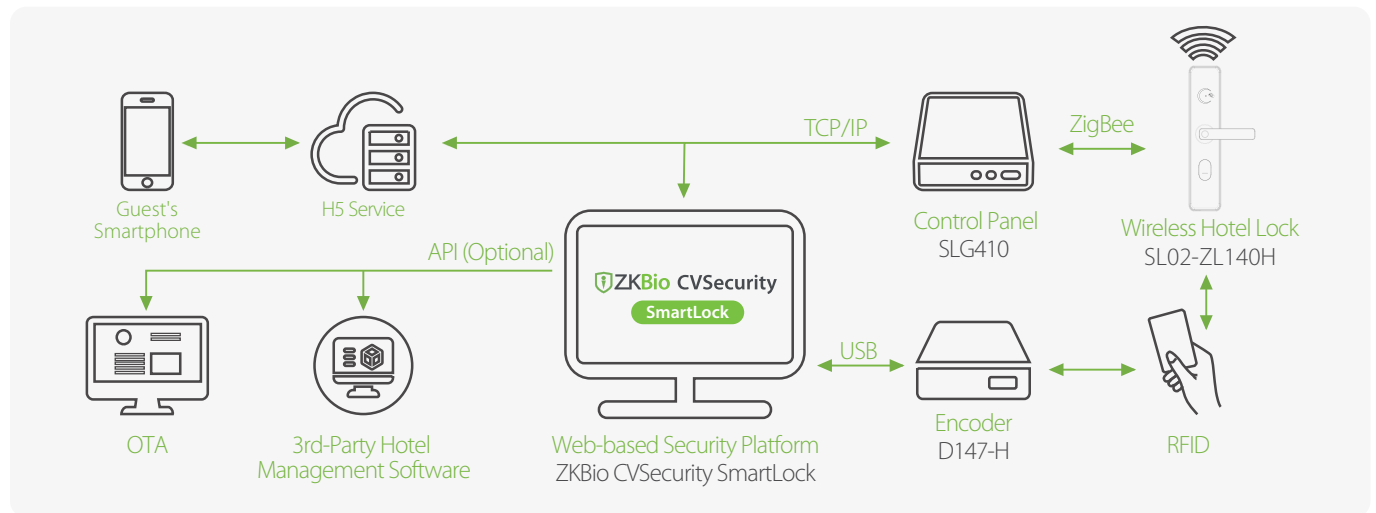
Free Egress

The lock can always be opened from the inside, and it is also possible to use software to unlock multiple devices in batches

Specifications

	Model	SL02-ZL140H
Material	Housing Material	Aluminum Alloy
	Front Panel	ABS
	Color	Black
Mortise Lock	Type	American Standard
	Backset	62mm (2-7/16")
	Axe Distance	Lever to Cylinder: 95mm (3-3/4"), Lever to Thumbturn: 62mm (2-7/16")
	Square Spindle	8x8mm square
	Faceplate (HxW)	26x204 mm (1-1/41" x 8-1/32"), squared standard
	Built-in Detectors	Latch Bolt, Deadbolt, Cylinder
Technical	Unlocking Methods	Card, Web Application, Mechanical Key Backup
	Capacity	Event Log: 500 entries (Auto-overwrite)
	Card Reader	S50/S70 IC Card @13.56 MHz
	NFC Supported	Yes (ISO/IEC 14443 A)
	Encoder	D147-H
	Audio Prompt Language	English
	Wireless Communication	Zigbee 3.0 (IEEE 802.15.4)
	Power Supply	4 × LR6 AA (Alkaline recommended only)
	Battery Life	Approximately 1 year and 7 months (* Based on lab testing: 10 daily cycles with deadbolt actuation and Zigbee connected.)
	Supported Software	ZKBio CVSecurity SmartLock
Door Compatibility	Door Type	Swing Mortise Door
	Door Thickness	40 to 63 mm (Standard)
	Door Swing	Right Inward (Standard). (For non-standard door swing, please specify at purchase for proper fit.)
General	Net Weight	2.3 kg
	Gross Weight	2.7 kg
	Product Dimensions (HxWxT)	Exterior: 330x71x22mm Interior: 330x71x22mm * Excluding lever height: 41mm
	Package Dimensions (LxWxT)	460x240x95 mm
	Operating Temperature	-20°C to 55°C (-4°F to 131°F)
	Operating Humidity	5% to 95% RH (Non-condensing)
	Certifications	CE, FCC
	Package Contents	Front/Rear Trim; Washer; Lock Body Kit (Includes mortise, strike plate, locking box); Lock cylinder Kit (Includes 2 mechanical keys); Studs & Screws Kit; IC Card * 2; Installation Template; Installation Guide.

Configuration



Note: It illustrates a complete hotel lock management system for ZKBio CVSecurity SmartLock and provides commonly used API interfaces.

Dimensions(mm)

