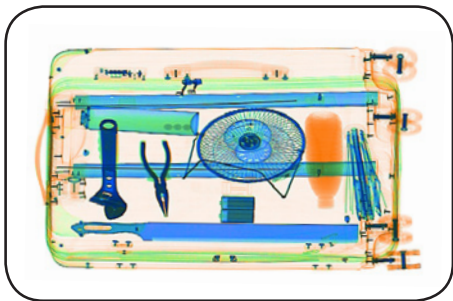


# Dual Energy X-ray Inspection System

## ZKX10080



### Highlights

- Adjustable belt speed
- Large baggage and parcel screening
- Folding design for easy loading

### Standard

- Fingerprint console board
- Dual monitor operation desk
- Bi-directional scanning

### Optional

- Video surveillance
- Face recognition
- Energy saving function
- Rat expelling function

### Introduction

ZKX10080 X-ray inspection system increases the operator's ability to identify potential threats; the device is designed to scan the objects up to a size of 100 × 80cm.

ZKX10080 uses reliable high quality dual energy X-ray generator. With the superb image algorithm, ZKX10080 could offer clear scanning image, which allows operators to identify potential threat items visually. Also, ZKX10080 equipped with a lowered conveyor height to make it easier to put the luggage on.

ZKX10080 has innovative biometric identify function for operators, improving the security of system and preventing operator from forgetting password.

The conveyor could be folded to reduce the package volume so that could save the transportation cost. With modern designed side door, the maintenance would be much easier.

## Specifications

<b>Tunnel Size (W*H)</b>	1006*803 (mm)
<b>Speed</b>	0.2 to 0.4 m/s
<b>Height of Transmission Belt</b>	385 mm
<b>Maximum Load</b>	200 kg (Adequate distribution)
<b>Wire Resolution</b>	38 AWG
<b>Space Definition</b>	Horizontal $\Phi$ 1.0mm \ Vertical $\Phi$ 2.0mm
<b>Penetrate Definition</b>	32 AWG
<b>Penetration</b>	34mm steel board
<b>Monitor</b>	21.5 inch LED X 2
<b>System Function</b>	High density alert, Explosive/ Drug auxiliary detect, TIP, Luggage counter, date/time display, User management, Training.
<b>Film Safety</b>	ASA/ISO1600 standard of film safety
<b>Supported Software</b>	ZKBio SIS
<b>Communication Interface</b>	RJ45 (TCP/IP)

## X-ray System

<b>Tube Voltage</b>	160 KV
<b>Cooling</b>	Seal oil cooling / 100%
<b>Radiation Leak Dosage</b>	0.2 $\mu$ Gy/h (5cm from the surface)

## Installation Specification

<b>Size (L*W*H)</b>	2984*1405*1666 (mm)
<b>Package Size (L*W*H)</b>	2200*1500*1750 (mm)
<b>Console Desk Size (L*W*H)</b>	1320*900*1320 (mm)
<b>Package Weight</b>	1150KG+135KG (Console desk)
<b>Power Consumption</b>	1 kVA
<b>Noise</b>	53.8 dB(A)

## Dimension

