



## Introducing Series ZK75



LED Touch Screen



Fingerprint



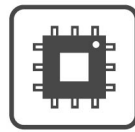
DC Powered COM



Front Panel Protection



LED-backlit



Aluminum Housing

ZK75 Series is an intelligent all-in-one POS terminals with optical fingerprint scanner. The Merchants could manage their club members through POS terminals.

Our all-in-one POS terminal was built-in the Intel Bay Trail Quad-Core processor and brightness display screen. The highlight LED Backlight Screen can support Five-wire analog resistive type&Projected capacitive touch for your special applications.

### \* IP64 Water & Dust-proof Front Panel Protection

Cashier's display panel is mad of pure plane and touch dead angle-free;seamless screen can waterproof and dustproof.



### \* Robust Aluminum Enclosure & Ultra-slim Appearance Design

- Machine enclosure is made of aluminum design can be used at hostile environments.
- Small Footprint and compact design. Easy access M/B, 2.5" HDD & RAM for installation and maintenance.



### \* ZK7550 15" POS Terminal

Display Resolution : 1024 x 768  
Brightness: 350cd/ m<sup>2</sup>



### \* ZK7550W 15.6" POS Terminal

Display Resolution: 1366×768  
Brightness : 220cd/ m<sup>2</sup>



## Special Customization Features/Screen



Magnetic Stripe Card Reader



Wi-Fi & NFC



RFID



1D/2D Barcode



i-Button



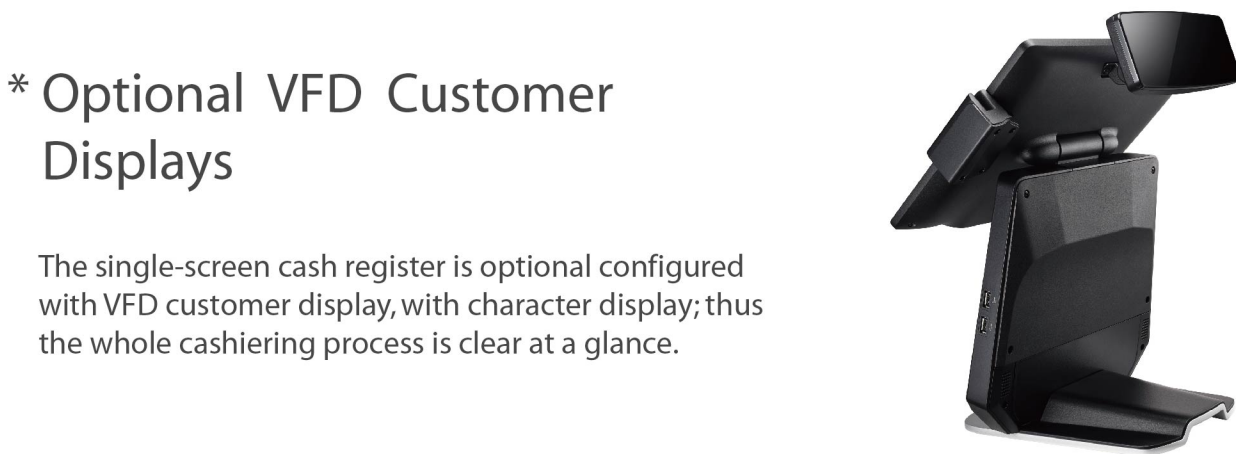
Cash Drawer

ZK75 Series is an intelligent POS System with multiple instrument optional(Magnetic card reader, 1D/2D barcode scanner or 2-in-1,3-in-1 module, i-Button&MSR/MIFARE RFID).We provide the optional configuration referring to the features of your industry.  
ZKTeco provide the customized POS terminal depending on the exact requirement from clients.



### \* Optional 8"/10" Customer Display Screen

- Optional 8"/10"/8"+8" Customer Display Screen can be used on ZK7550.
- Optional 8"/10" Customer Display Screen can be used on ZK7550W.
- The auxiliary screen is LED type, which can implement automatic switching between customer display and advertisement. The cashier can use customer display to play daily advertisement by software



### \* Optional VFD Customer Displays

The single-screen cash register is optional configured with VFD customer display, with character display; thus the whole cashiering process is clear at a glance.



### \* Front External Peripheral Interfaces

Front external peripheral interfaces can be connected to multiple peripherals of cash register to satisfy your business demand. With removable hard drive design, hard drive can be replaced without disassembly.



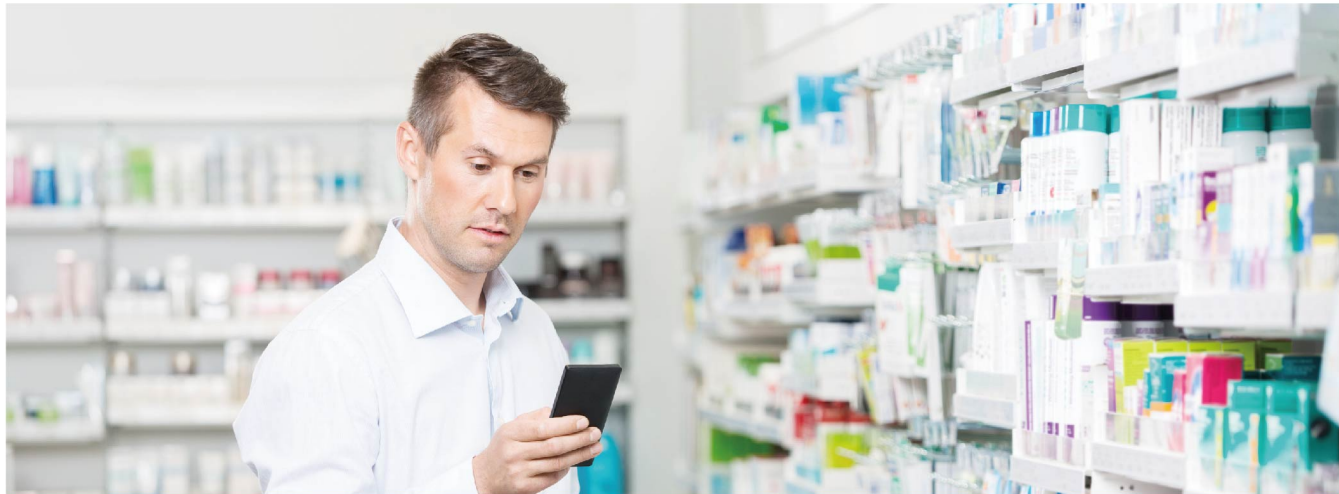
MAKE YOUR LIFE SPARKLE  
WITH BIOMETRIC  
INNOVATIONS



The optical fingerprint scanner connected with the POS Cash Register has the following advantages:

The Merchants could manage their club members through POS terminals, including fingerprint collection, fingerprint registration, fingerprint matching, fingerprint retrieval and Anti-spoof/fake detection capability.

Application Scenarios



Retail industry  
(Shopping center, convenience store, book Store, Retail Shop, etc.)



Catering industry  
(Hotel, restaurant, fast food restaurant, tea/coffee house, etc.)



Exclusive Store  
(Clothing, medical, maternal and child supplies, furniture, digital products)

Parameter Indexes and I/O Interface

Environment Operation Temp.: 32°~95°F (0°~35°C) Storage Temp.: -4°~ 140°F (-20°~ 60°C) Relative Humidity: 20% ~ 80%	Intel Celeron J1900	USB2.0 DC IN COM1 COM2 COM3 VGA LAN USB3.0 CASH USB2.0*2 LINE OUT
	Side	USB2.0*2

ZK75 Series Specifications

System	POS Ready Windows 7/ Windows Embedded 8.1 Industry Pro / Win10 IoT Enterprise
Processor	Intel® Celeron J1900 QC 2.0GHz
Memory	One SO-DIMM socket supports DDR3L 1333 up to 8GB
Storage	2.5" SATAIII HDD × 1
Network	LAN × 1 (RJ45 10/100/1000 Base-T)
Chassis Housing	Aluminum

Specifications of Display/Touch Screen

Model NO.	ZK7550	ZK7550W
LCD Display Size	15" LCD	15.6" LCD
Max.Resolution	1024×768	1366×768
Brightness	350cd/㎡	220cd/㎡
Backlight	LED	
Touch Panel Type	Five-wire analog resistive type&Projected capacitive touch	
Dimension(W×D×H)	366 x 265 x 377 mm	398×251×365mm
Power Supply	90W 19V power adapter	

I/O Port

Model NO.	ZK7550	ZK7550W
USB	×6(USB2.0×5,USB3.0×1)	
Powered COM	×3 (5V/12V BIOS selection)	
Cash Drawer Port	× 1 (12V/24V RJ11 cash drawer port BIOS selection)	
Audio Port	Line-out × 1	
VGA	× 1	
19V DC IN	× 1	

ZK Building, Wuhe Ave, Bantian, Longgang District, Shenzhen, China  
Tel:+86 755-89602345  
E-mail: Sales@zkteco.com



© Copyright 2017, ZKTECO CO.,LTD. ZKTeco Logo is a registered trademark of ZKTeco or a related company. All other product and company names mentioned are used for identification purposes only and may be the trademarks of their respective owners. All specifications are subject to change without notice. All rights reserved.

ZKTeco



ZK75 Series  
All in One Biometric Smart POS Terminal

